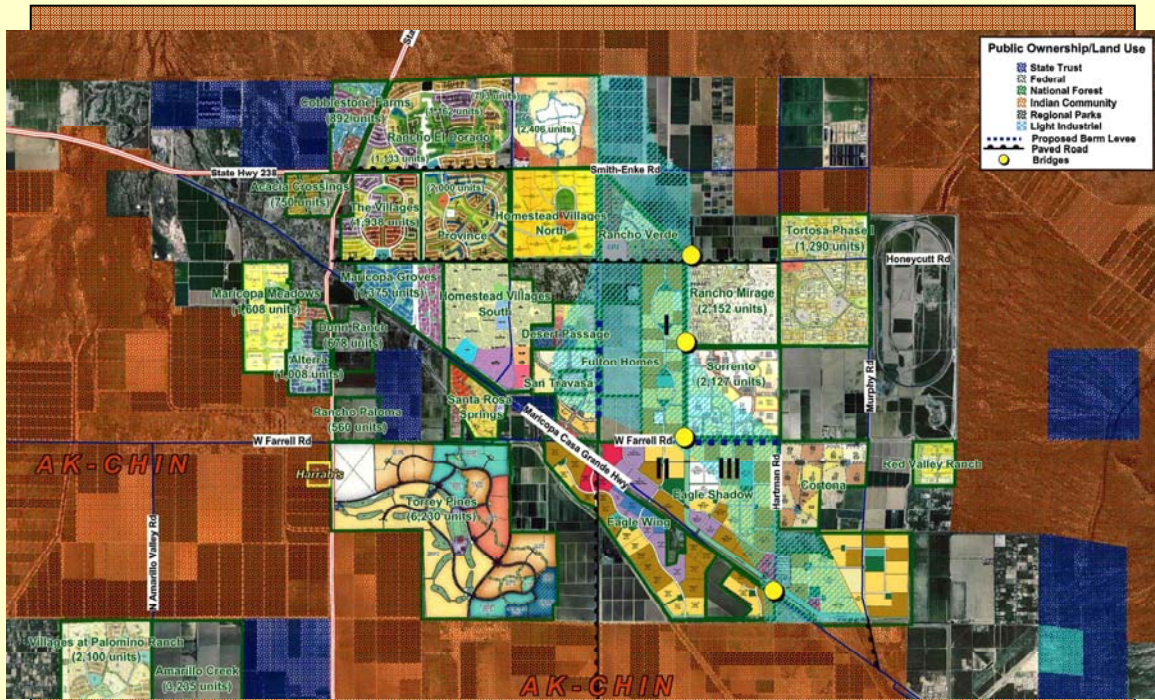


# THE SANCTUARY AT MARICOPA 2008

## MARICOPA, ARIZONA



### The Sanctuary at Maricopa

This 328-acre master planned community is located in the heart of the "hypergrowth" City of Maricopa. It is bounded on three sides by other large master communities and will be linked to the neighboring communities with an 8 mile long trail system that will offer numerous active and passive park areas in addition to biking and hiking trails. The Sanctuary is currently planned for over 1000 units with a variety of lot sizes including some high density product. The first phase is currently platted showing a variety of parks and the trail system.