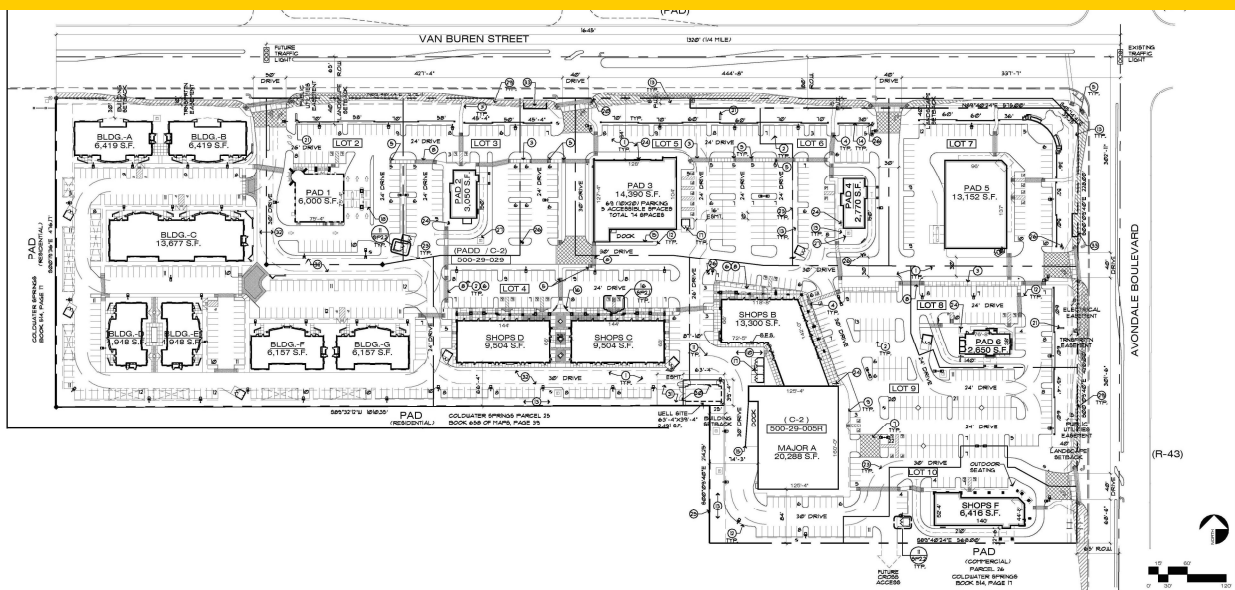


**COLDWATER SPRINGS PROMENADE  
SWC 115th AVENUE  
&  
VAN BUREN  
AVONDALE, ARIZONA**

2007/2008



This new development is planned for a 20-acre retail and office complex. The project is located 1/4 mile from the I-10 & Avondale Blvd. interchange and is on the true “going home corner” off the I-10 freeway. The trade area has incredible housing growth as well as multiple existing and planned employment centers. Located across the street from this site is the City of Avondale Municipal City Center and office Complex. Tenants in the development include Staples, Tesco, M&I Bank, Jack in the Box and Panda Express.